

APPROVAL SHEET

Customer : 일오삼코리아

Model : S9KC100BH-S(A300)

Date : 2017.02.16

SIGNATURE FOR APPROVAL
DATE OF APPROVAL



SPG Co.,Ltd.

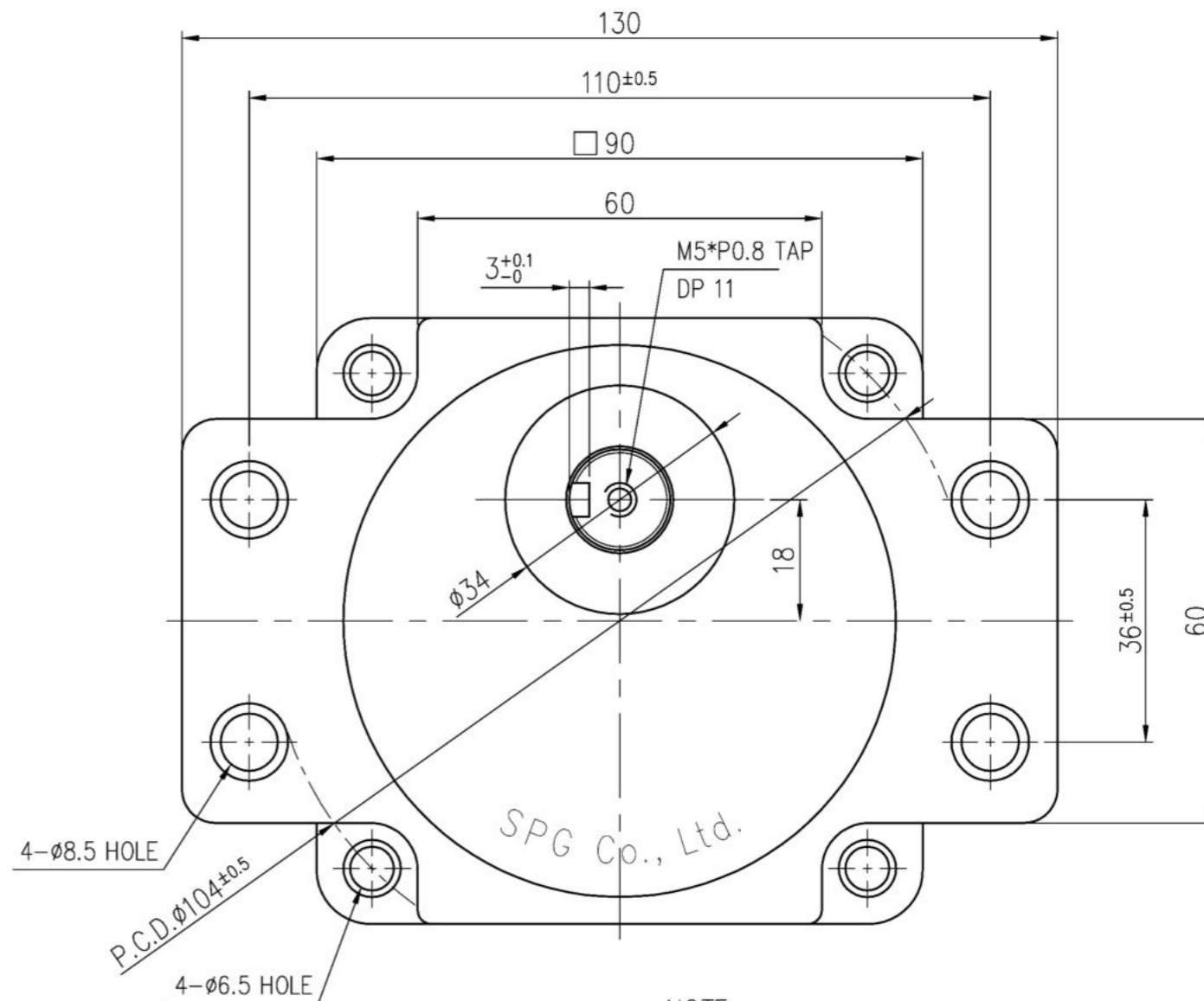
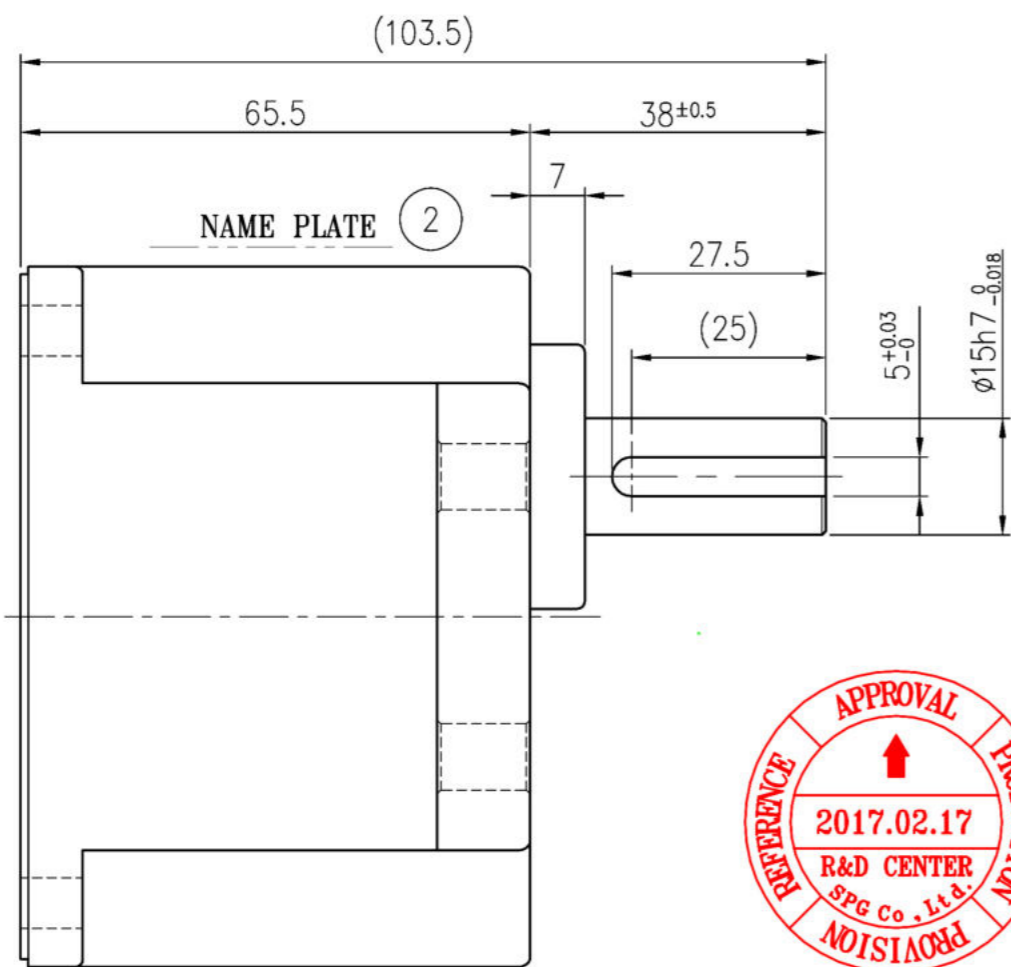
SPG Co.,Ltd.

TEL. : 82-32-820-8320~1

FAX. : 82-32-812-6218

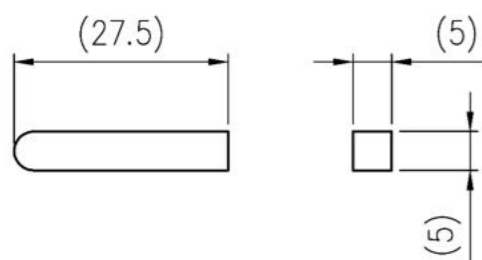
45, Cheongneung-daero, 289beon-gil, Namdong-gu,
Incheon, Korea (67B 12L, Namdong complex, Gojan-dong)

SPG Co.,Ltd.		
Drawn	Checked	Approved

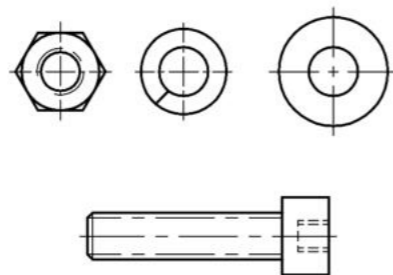


NOTE

1. GEAR RATIO : 1/100 (5 STAGES)
2. SPINDLE END PLAY : 0.5mm Max.
3. ROTATION
 - * MOTOR C.W → HEAD C.C.W
 - * MOTOR C.C.W → HEAD C.W
4. PERMISSIBLE TORQUE : 200kg·cm



KEY (4)



SCREW SET (3)

ITEM	PART NAME	MATERIAL	Q'TY	SIZE	NOTE
4	KEY	S45C	1	5*5*L27.5	1R
3	SCREW SET		1	M6*L25	
2	NAME PLATE	PET FILM	1		
1	GEAR HEAD		1	□90	

날 짜 DATE	서 명 SIGN	변 경 내 용 NOTE	변 경 이 유 REVISION
재 질 MATERIAL	표 면 처 리 SURFACE FINISH	척 도 SCALE	1/1 공 차 TOLERANCE ± 1.0
제 도 DRAWN	설 계 DESIGN	검 도 CHECK	승 인 APPR.
J.Y.JUNG	Y.M.WON	N.Y.KIM	S.M.KIM
GEAR HEAD ASS'Y			
S9KC100BH-S(A300)			
SPG Co., Ltd.		작 성 일 DATE	2017.02.16
		도 번 DWG NO.	A-200-3408-00

APPROVAL SHEET

Model : XFM9100G-A115

Date : 2017.02.22

SIGNATURE FOR APPROVAL
DATE OF APPROVAL



SPG Co.,Ltd.

SPG Co.,Ltd.

67B/L 12 Lot 628-11, Gojan-Dong, Namdong-Gu, Incheon, Korea

TEL. : 82-32-820-8320~1

FAX. : 82-32-812-6218

SPG Co.,Ltd.		
Drawn	Checked	Approved

MOTOR SPECIFICATION

PAGE

1 of 2

MODEL : XFM9100G-A115

ELECTRICAL

- 1. TYPE : 3 Phase Brushless DC Motor
- 2. POWER SOURCE : DC 24V
- 3. POLES : 10P
- 4. NO LOAD CHARACTERISTICS
 - 4-1. CURRENT : 0.96 A ±15%
 - 4-2. INPUT POWER : 23.0 W ±15%
 - 4-3. SPEED : 3620 r/min ±10%
 - 4-4. ROTATION : C.W/C.C.W (Output Spindle)
- 5. RATED LOAD CHARACTERISTICS
 - 5-1. CURRENT : 7.83 A ±15%
 - 5-2. RATED SPEED : 2780 r/min (ref.)
 - 5-3. RATED TORQUE : 3.5 kgf · cm (ref.)
 - 5-4. OUTPUT POWER : 100 W (ref.)



● Both NO LOAD CHARACTERISTICS and RATED LOAD CHARACTERISTICS represent the measured values by the SPG test driver. The value can be different by a motor driver.

6. DIELECTRIC STRENGTH

Motor shall withstand a potential of 500V RMS for 1 minute(600V RMS for 1 second) duration between coil leads and frame. (Cutoff Current 5mA)

7. INSULATION RESISTANCE

100MΩ minimum at DC 500V MEGA TESTER between winding and frame.

DATE	SIGNATURE	CHANGE CONTENTS		
DESIGNED	CHECKED	APPROVED	MODEL NAME	XFM9100G-A115 ----- BRUSHLESS DC MOTOR
(주) 에스피지			RE-DATE	DRAWING NO
SPG Co., Ltd.			DATE	A-002-9100-00
			2017.02.22	

MOTOR SPECIFICATION

PAGE

2 of 2

8. TEMPERATURE RISE
8-1. WINDING : $\Delta T = 85\text{deg Max. (Rated Voltage, Rated Load)}$
8-2. Protected Type : None
9. Connection : See drawing No. A-002-9100-00
10. Leads : UL2464 PVC Jacket
UL3266 AWG#20(Yellow, Red, Blue)
UL3266 AWG#24(White, Black, Brown, Green, Orange)
Connector Housing 5557-08R (Molex)
Connector Terminal 5556T (Molex)
11. INSULATION CLASS : B Class
12. DUTY : Continuous (Rated Voltage, Rated Load)
13. TEMPERATURE RANGE : $0^{\circ}\text{C} \sim +40^{\circ}\text{C}$ (Motor, Nonfreezing)
14. HUMIDITY RANGE : RH 85% Max. (Noncondensing)

MECHANICAL(MOTOR)

1. SHAFT RUN OUT : Measured 3 mm from shaft end 0.05 mm Max.
2. SHAFT ENDPLAY : 0.5mm Max.
3. BEARING : Ball Bearings
4. AUDIBLE NOISE : 45dB Max.(No Load)
1) 30cm distance from mounting surface
2) Sound level meter "A" scale
3) Background noise : 25dB Max.
4) At rated voltage
5. DURABILITY : 10,000 hr
6. APPEARANCE : To be free from any defects that will adversely affect appearance.
7. MARKING : See drawing No. A-002-9100-00
8. DIMENSION : See drawing No. A-002-9100-00

(주) 에스피지RE-
DATE

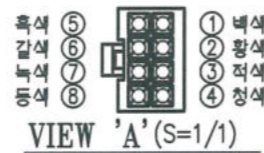
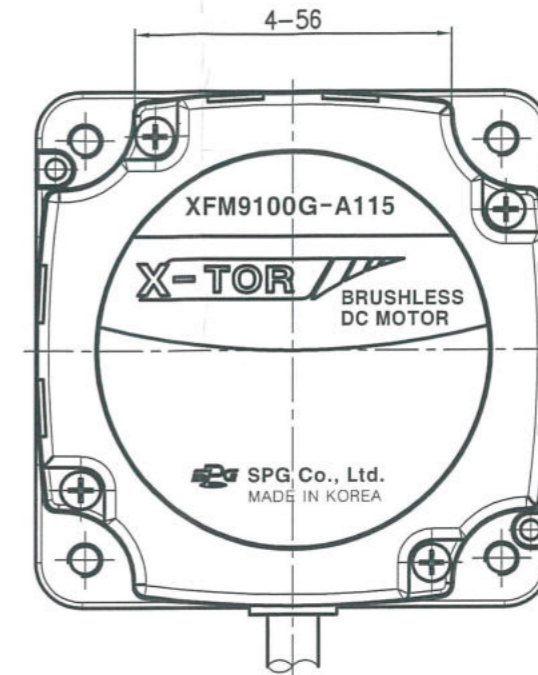
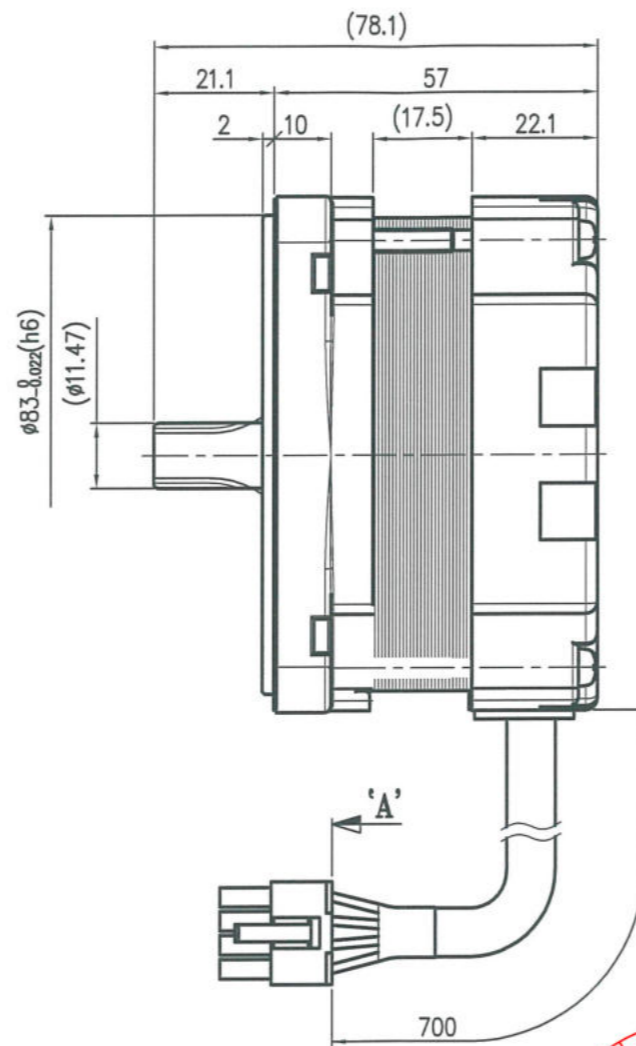
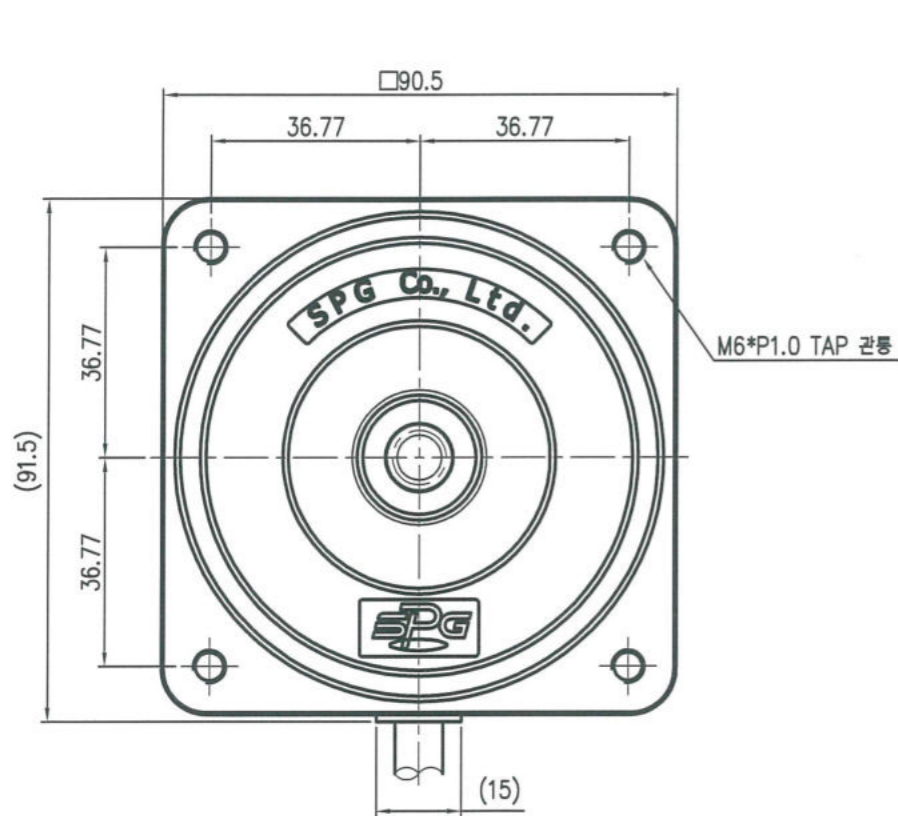
DRAWING NO

**SPG Co., Ltd.**

DATE

2017.02.22

A-002-9100-00



[CONNECTOR SPECIFICATION]
 CONNECTOR HOUSING : 5557-08R [MOLEX]
 CONNECTOR PIN : 5556T [MOLEX]

PIN No.	SIGNAL	COLOR	PIN No.	SIGNAL	COLOR
⑤	GND	흑색	①	VCC	파색
⑥	H3	갈색	②	U	황색
⑦	H2	녹색	③	V	적색
⑧	H1	동색	④	W	청색



NOTE

1. TYPE : 3Ph. BLDC MOTOR UNIT ASS'Y
2. MOTOR INPUT VOLTAGE : 24V d.c.
3. ROTATION : VIEWED FROM SHAFT END C.W, C.C.W
4. END PLAY : 0.5mm Max.
5. FOR MORE SPECIFICATIONS SEE "MOTOR SPECIFICATION SHEET"
6. CUSTOMER IS RESPONSIBLE FOR DETERMINING THAT MOTOR PERFORMANCE IS SUITABLE IN THE APPLICATION

DATE	SIGN	NOTE	REVISION
DATE	SIGN	NOTE	REVISION
MATERIAL	SURFACE FINISH	SCALE	TOLERANCE
SCALE	1/1	TOLERANCE	± 1.0
DESIGN	CHECK	APPR.	NAME
2017.02.22	S.H.CHA	K.W.LEE	도명
SPG Co., Ltd.			작성일 DATE
			2017.02.22
			도번 DWG NO.
			A-002-9100-00

BLDC MOTOR ASS'Y
XFM9100G-A115